

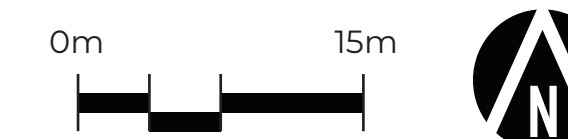


Design 1



Legend

- | | | | |
|---|---|--------------------|-----------------------|
| 1 ACCESSIBLE TRAIL
» ASPHALT SURFACE
» 3m WIDTH | 3 SPLASH PARK - OPTION 1 | 5 FENCE WITH GATES | 7 GRASSED PICNIC AREA |
| 2 WASHROOM/CHANGE ROOM | 4 SEATING AREA WITH SHADE SAIL
AND PICNIC TABLES | 6 PROPOSED TREES | |



Initial Project Cost \$2,613,500

This includes:

- Splash park features & mechanical system
- Washroom/change room
- Site fencing & security cameras
- Seating areas & trails
- Site furnishings & shade sail
- Landscaping
- Site utilities & infrastructure

How comfortable are you with the initial costs? Add a sticky dot

--	--	--

Ongoing (Operating) Cost \$100,000/yr=\$9.26/yr* tax increase

How comfortable are you with the ongoing costs? Add a sticky dot

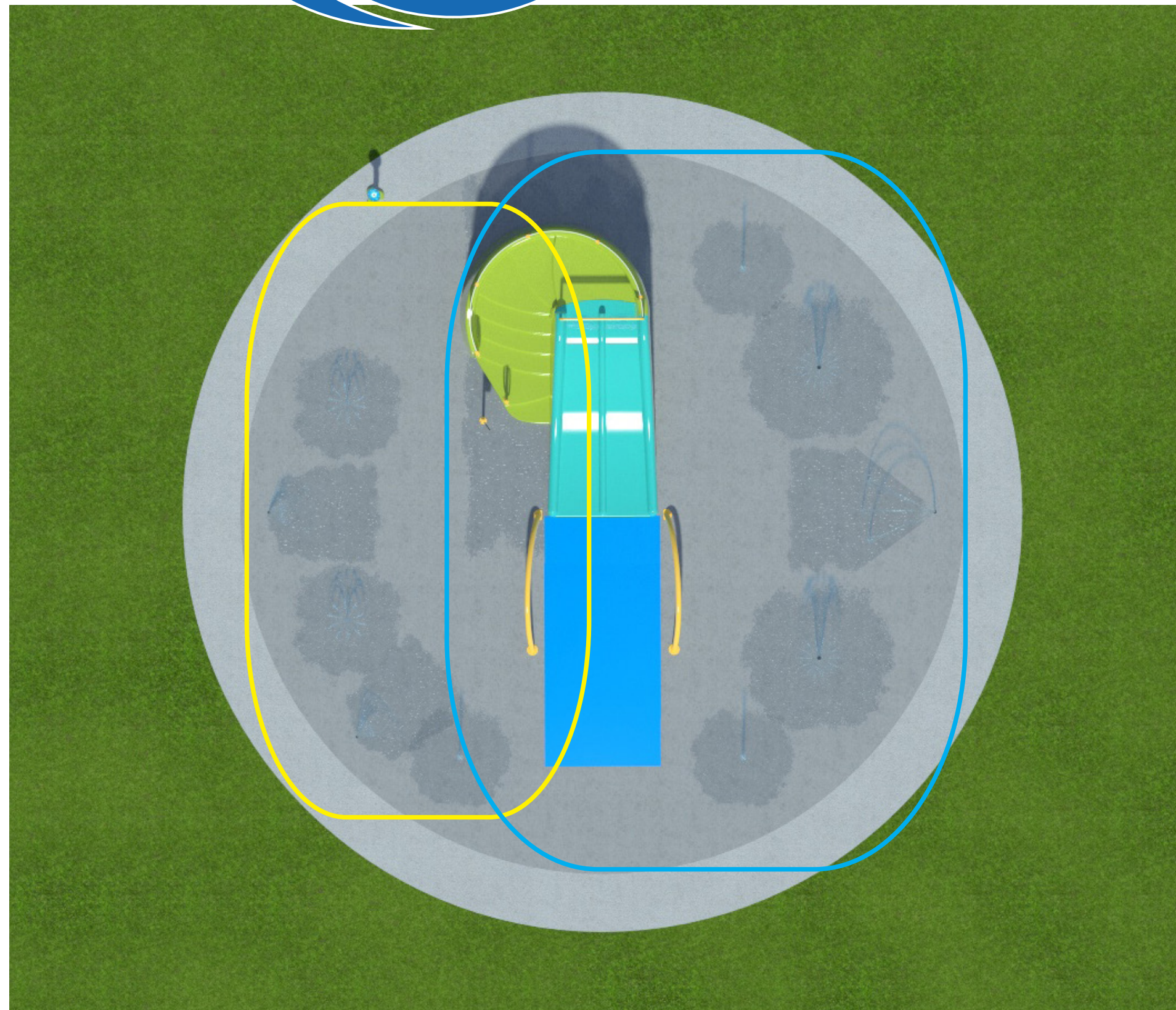
--	--	--

Comments/Feedback

* Based on the average household price of \$284,030



Design 1



Age Appropriate Zones

Gentle Activity Zone Infant/Toddler

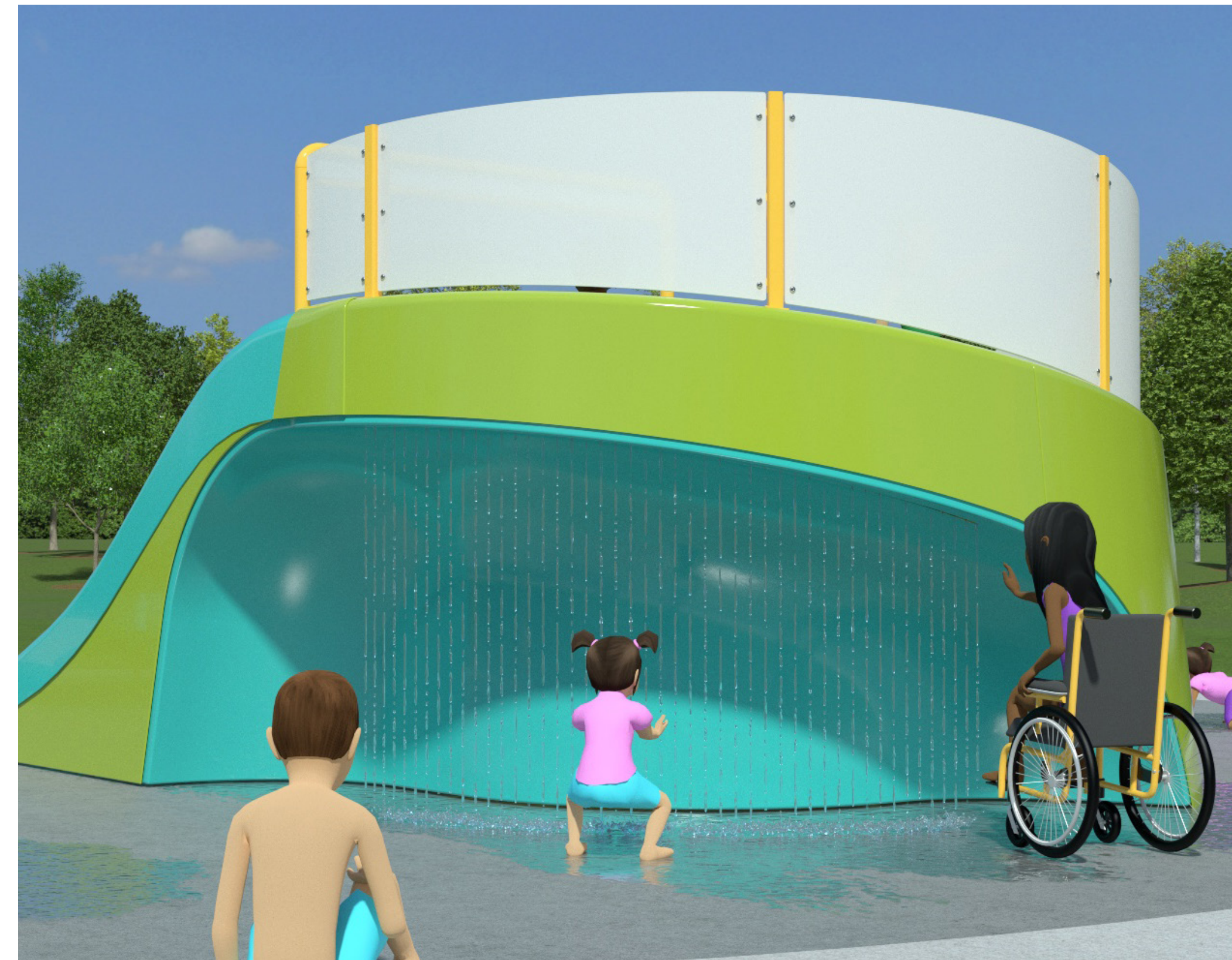
Learning to enjoy texture and water

- Lower, delicate ground sprays
- Lower structures with gentle water formations
- Placement of features close to perimeter and dry zones ensure easy adult supervision and interaction

Universal Zone All Ages

Variety of structures for the whole family

- Unique water formations pour, dump, spray wiggle, launch and spin
- Combines ground spray and structures for all ages
- Centrally placed in splash pad and often a transition zone from Gentle activity to Dynamic

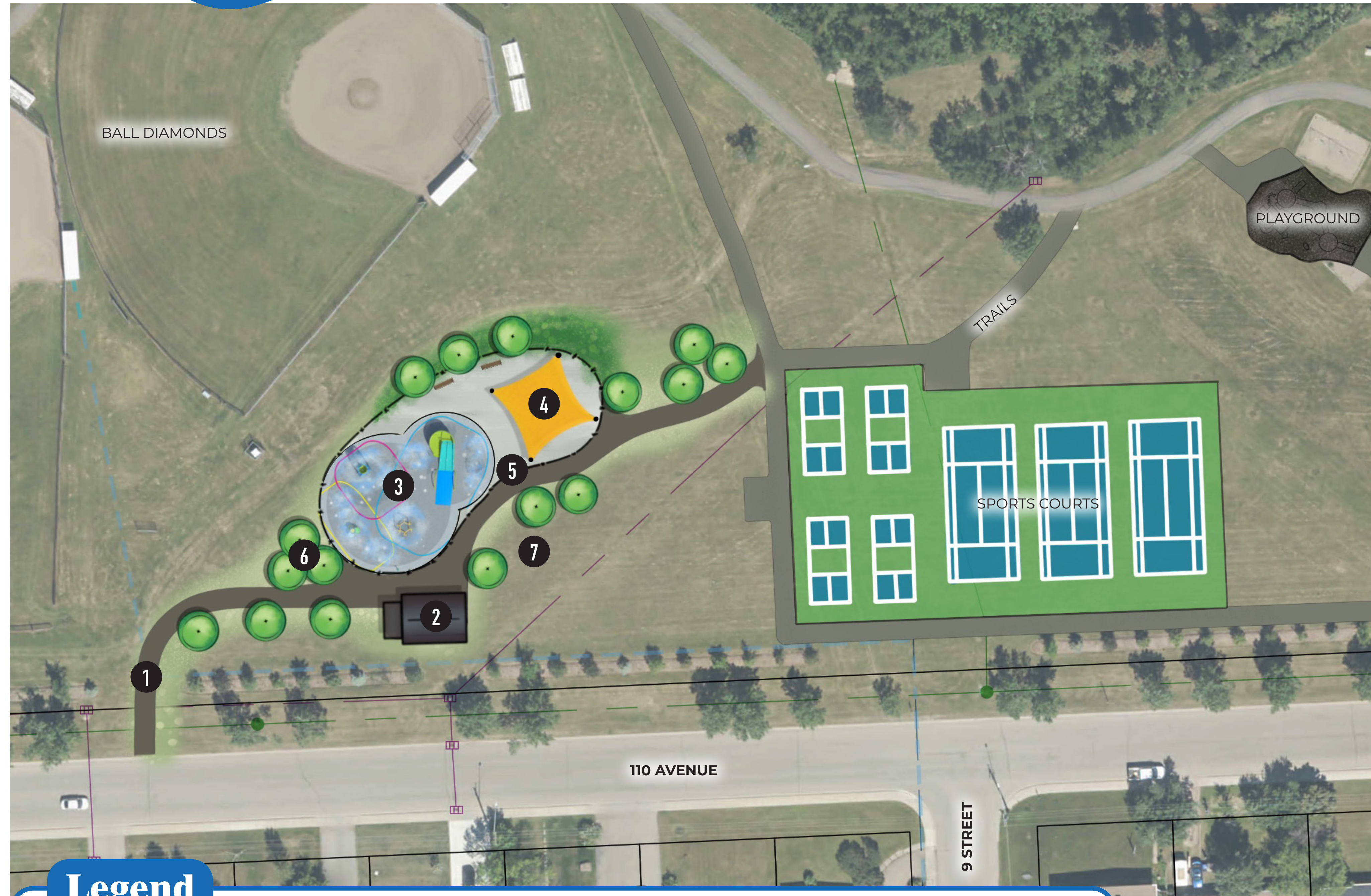


habitat
systems incorporated

aquatix
by landscape structures

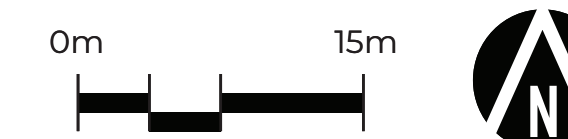


Design 2



Legend

- | | | | |
|---|---|--------------------|-----------------------|
| 1 ACCESSIBLE TRAIL
» ASPHALT SURFACE
» 3m WIDTH | 3 SPLASH PARK - OPTION 2 | 5 FENCE WITH GATES | 7 GRASSED PICNIC AREA |
| 2 WASHROOM/CHANGE ROOM | 4 SEATING AREA WITH SHADE SAIL
AND PICNIC TABLES | 6 PROPOSED TREES | |



Initial Project Cost \$3,164,700

This includes:

- Splash park features & mechanical system
- Washroom/change room
- Site fencing & security cameras
- Seating areas & trails
- Site furnishings & shade sail
- Landscaping
- Site utilities & infrastructure

How comfortable are you with the initial costs? Add a sticky dot

--	--	--

Ongoing (Operating) Cost \$110,000/yr=\$10.20/yr* tax increase

How comfortable are you with the ongoing costs? Add a sticky dot

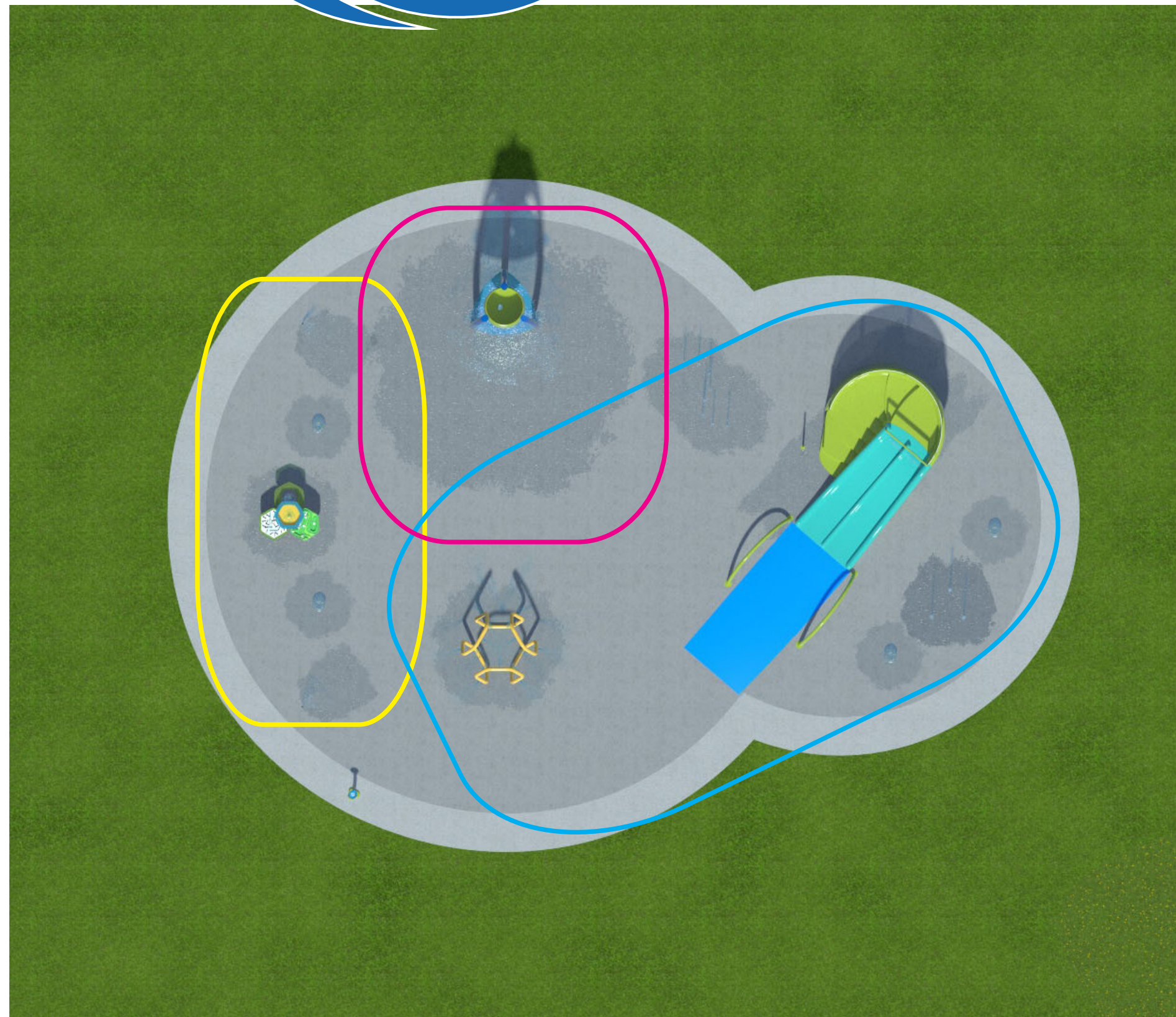
--	--	--

Comments/Feedback

* Based on the average household price of \$284,030



Design 2



Age Appropriate Zones

Gentle Activity Zone Infant/Toddler

Learning to enjoy texture and water

- Lower, delicate ground sprays
- Lower structures with gentle water formations
- Placement of features close to perimeter and dry zones ensure easy adult supervision and interaction

Universal Zone All Ages

Variety of structures for the whole family

- Unique water formations pour, dump, spray wiggle, launch and spin
- Combines ground spray and structures for all ages
- Centrally placed in splash pad and often a transition zone from Gentle activity to Dynamic

Dynamic Zone 7+ Years

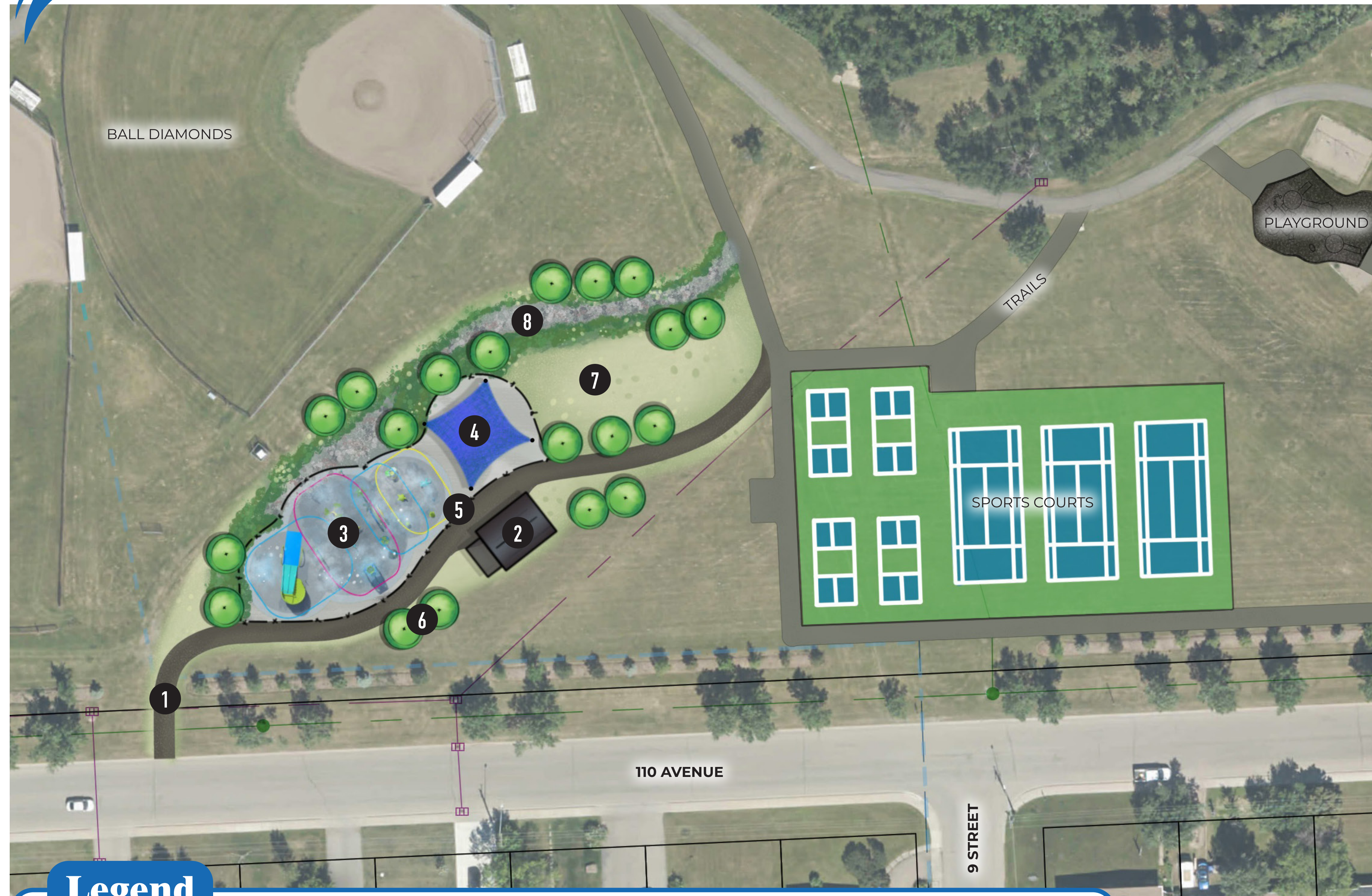
Continual excitement and interaction

- High Volume, highly interactive spray features and Climb N Play structures
- Combination of sprays and structures
- Placement of features close to perimeter and dry zones ensure easy adult supervision and interaction





Design 3



Legend

- | | | | |
|---|--|--------------------|-----------------------|
| 1 ACCESSIBLE TRAIL
» ASPHALT SURFACE
» 3m WIDTH | 3 SPLASH PARK - OPTION 3 | 5 FENCE WITH GATES | 7 GRASSED PICNIC AREA |
| 2 WASHROOM/CHANGE ROOM | 4 SEATING AREA WITH SHADE SAIL AND PICNIC TABLES | 6 PROPOSED TREES | 8 BIOSWALE |

0m 15m

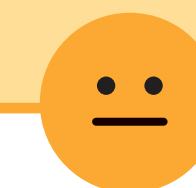


Initial Project Cost \$3,671,400

This includes:

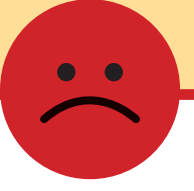
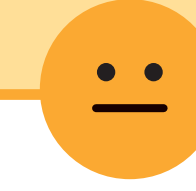
- Splash park features & mechanical system
- Washroom/change room
- Site fencing & security cameras
- Seating areas & trails
- Site furnishings & shade sail
- Landscaping
- Site utilities & infrastructure

How comfortable are you with the initial costs? Add a sticky dot



Ongoing (Operating) Cost \$120,000/yr=\$11.13/yr* tax increase

How comfortable are you with the ongoing costs? Add a sticky dot

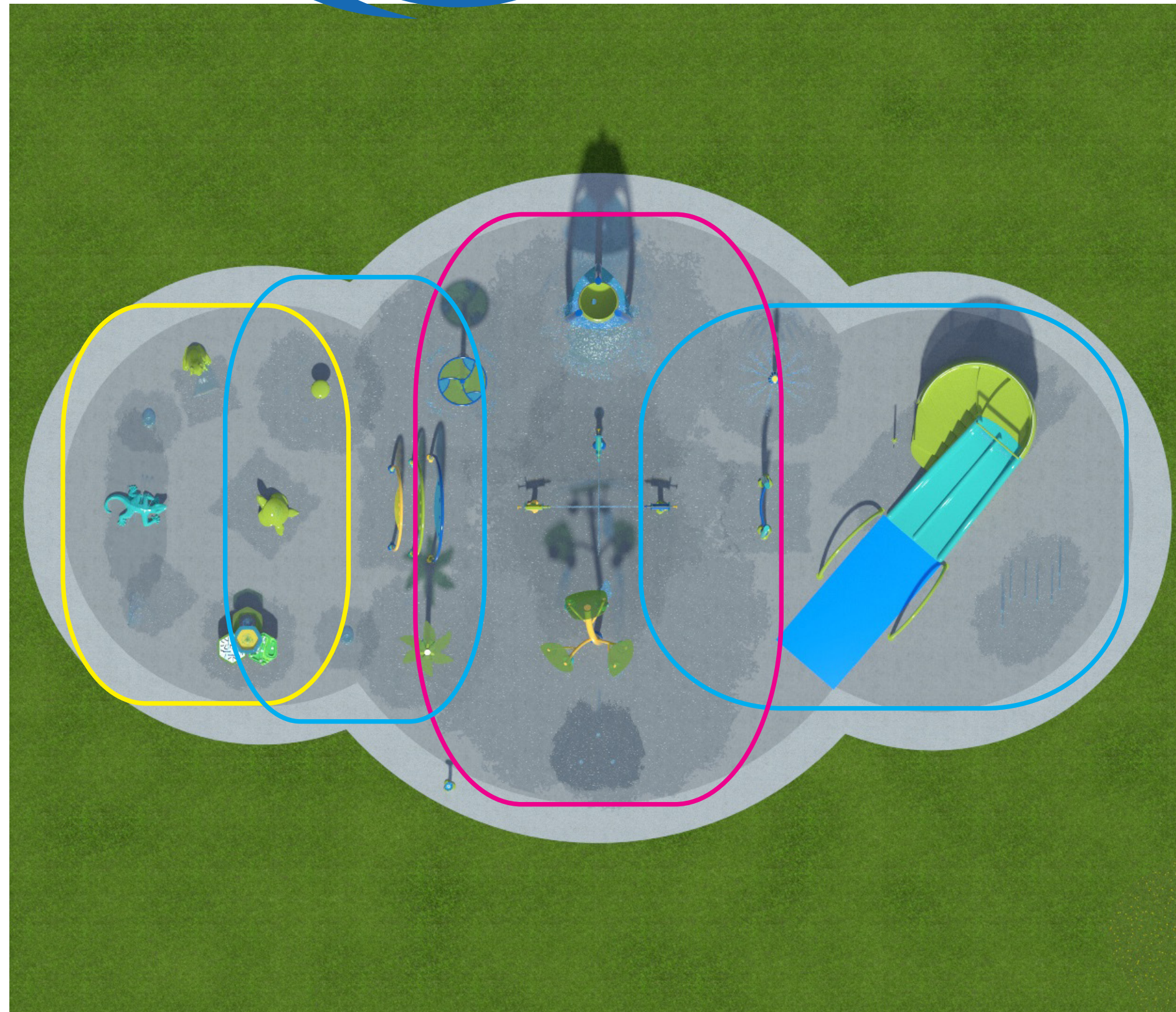


Comments/Feedback

* Based on the average household price of \$284,030



Design 3



Age Appropriate Zones

Gentle Activity Zone Infant/Toddler

Learning to enjoy texture and water

- Lower, delicate ground sprays
- Lower structures with gentle water formations
- Placement of features close to perimeter and dry zones ensure easy adult supervision and interaction

Universal Zone All Ages

Variety of structures for the whole family

- Unique water formations pour, dump, spray wiggle, launch and spin
- Combines ground spray and structures for all ages
- Centrally placed in splash pad and often a transition zone from Gentle activity to Dynamic

Dynamic Zone 7+ Years

Continual excitement and interaction

- High Volume, highly interactive spray features and Climb N Play structures
- Combination of sprays and structures
- Placement of features close to perimeter and dry zones ensure easy adult supervision and interaction

